

KLONDIKE SLEDGE

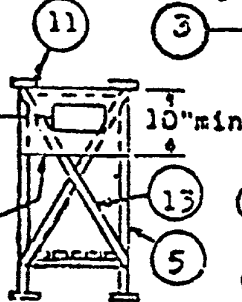
While your own design will be accepted, this diagram shows an authentic sledge. You may paint them bright colors but varnish or wax the bottom of the runners. Accessories may be added, canvas snow guard for front and sides. Use bolts or screws instead of nails - drill first to avoid splitting. Make towing bridle of rope, about 20 feet.

Bill of Material

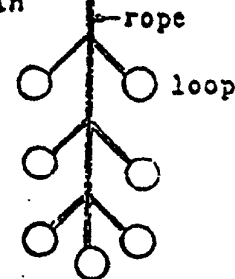
Pt.	Qty.	
1	2	-4"x $\frac{1}{2}$ "x6'6" - runner
2	6	-1"x1"x18" - cross support
3	4	- $\frac{1}{2}$ "x4"x5" - floor cover
4	8	-1"x2"x6" - upright support
5	2	-1"x2"x40" - rear upright
6	2	-1"x2"x30 $\frac{1}{2}$ " - 2nd rear upright
7	2	-1"x2"x21 $\frac{1}{2}$ " - 2nd front upright
8	2	-1"x2"x12" - front support
9	2	- $\frac{1}{2}$ "x2"x6'0" - hand rail
10	1	- $\frac{1}{2}$ "x2"x30" - front curved guard
11	1	-2"x2"x18" - rear hand rail
12	1	- $\frac{1}{4}$ "x10"x18" - Pocket holder
13	2	-1"x2"x to suit bracing

Envelope type pocket tack or staple, so Assay Report (6"x8") can be slipped in.

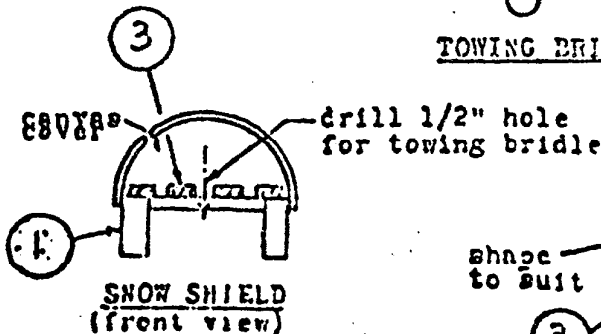
OR
CLIPBOARD



REAR VIEW



TOWING BRIDLE



SNOW SHIELD (front view)

shape to suit

bevel

skins can be used as runners

NOTE: SLEDGE MUST BE MADE OF WOOD WITH THE EXCEPTION OF SKIS AS RUNNERS.
SLEDGE MUST BE CONSTRUCTED BY THE BOYS WITH ADULT SUPERVISION

